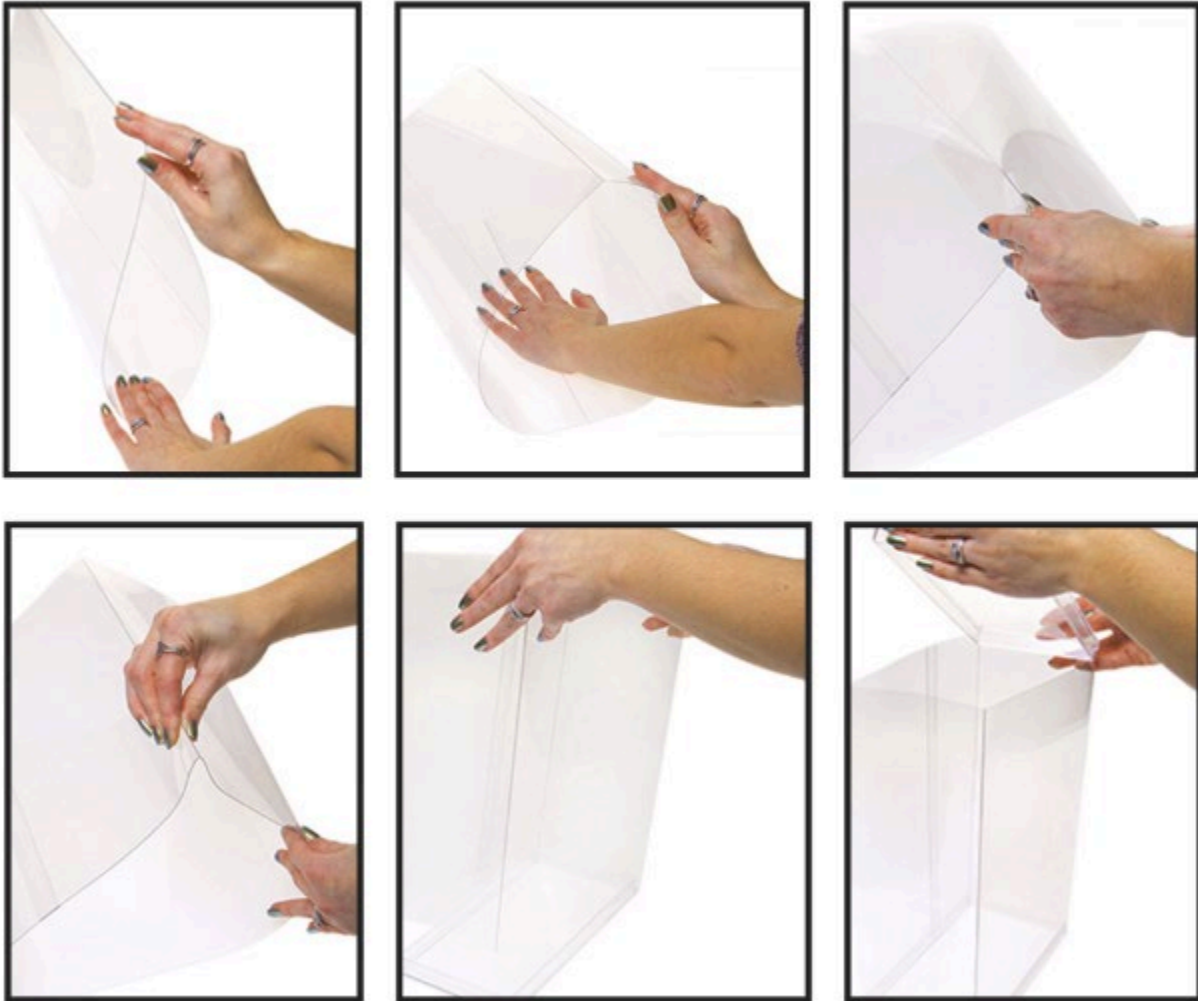


Collecting[®] WAREHOUSE

DollSafe™ Deluxe Assembly Instructions



1. Begin with a clean, smooth surface.
2. Open the DollSafe sleeve, and gently press the creased corners open.
3. Once those corners are open, crease the opposite corners.
4. Gently flex and crease all 4 corners several times until the case takes shape.
5. For Deluxe DollSafe sleeves, insert the acrylic endcaps *inside* the DollSafe sleeve. The acrylic endcaps should have a perfect friction fit.

Troubleshooting: if your sleeve curves inward or is not square in all 4 corners, repeat steps 1 through 4 again. The final result should have smooth, flat sides and square corners. For more help, contact us at email@collectingwarehouse.com or by phone at (877) 829-2999.